

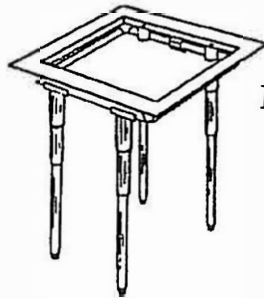


ATLAS METAL

DROP-IN TRAY AND RACK DISPENSERS

MODELS: DIT FOR TRAYS
DIR FOR RACKS

OPERATION, INSTALLATION AND MAINTENANCE MANUAL



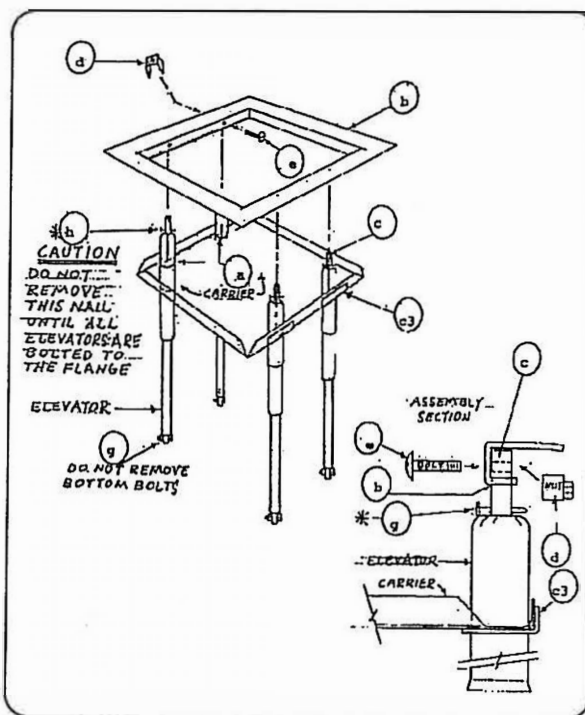
MODEL DIT



MODEL DIR



WARNING! INSPECT UNIT THOROUGHLY FOR ANY DAMAGE THAT MAY HAVE OCCURRED DURING SHIPMENT BEFORE LOADING



TOOLS REQUIRED: Straight blade screwdriver.
READ AND REVIEW INSTRUCTIONS AND ILLUSTRATIONS COMPLETELY BEFORE ASSEMBLY.

WARNING: TO AVOID PERSONAL INJURY (h) "NAIL" MUST REMAIN IN PLACE DURING ASSEMBLY & SERVICE ELEVATORS ARE UNDER EXTREME PRESSURE, USE EXTRA CARE!!!

- (1) check parts quantities
- (a) 1 ea. carrier assembly (mod. 1014 & 1020 2 ea.)
- (b) 1 ea. flange assembly
- (c) 4 ea. elevator assemblies (mod. 1014 & 1020 2 ea.)
- (d) 4 ea. elevator nut (mod. 1014 & 1020 2 ea.)
- (e) 4 ea. 1/4-20x1 1/4" screws truss head s/s (mod. 1014 & 1020 2 ea.)
- (f) 4 ea. 1/4-20x1" hex bolt s/s w/nuts included on assembled elevator (mod. 1014 & 1020 2 ea.)
- (g) 4 ea. 8 penny nail f/spring retention (mod. 1014 & 1020 2 ea.)

WARNING: IF PARTS ARE NOT COMPLETE, DO NOT ASSEMBLE.

(2) Carefully place elevator (c) through holes in the carrier tray (a) so that the "tee" assembly fits behind the ears of the carrier tray (c3). Place flange assembly (b) over the elevators through the mounting holes, and attach elevator nut (d) under flange around elevator tube. Insert screw (e) and tighten till secure. Repeat on all elevators.

WARNING: "ONLY IF ABOVE STEPS ARE COMPLETE, PROCEED TO NEXT STEP."

(3) TO REMOVE THE NAIL (h) PRESS DOWN ON CARRIER TRAY (a) TO RELEASE SPRING TENSION, THEN REMOVE THE NAIL.

(4) TO REMOVE ELEVATORS REVERSE ALL ABOVE PROCEDURES.

DROP-IN TRAY AND RACK DISPENSERS

MODELS: DIT FOR TRAYS
DIR FOR RACKS

GENERAL INFORMATION

OPERATION:

Load items on carrier tray, "DO NOT DROP" check to see if items fit on carrier tray with no more than 1" of side play. When fully loaded push down on load and slowly release to allow load to set at proper dispensing height.

TROUBLE SHOOTING:

Load uneven upon return

Tubing dented/Springs caught in tubing
See elevator removal/spring change

Tray/Rack won't dispense

Incorrect springs specified check
Resubmit tray/rack data

DISPENSING PROBLEMS PERSIST . . .

PUT DISPENSER OUT OF SERVICE! CALL FACTORY FOR SERVICE AUTHORIZATION. USE LICENSED QUALIFIED SERVICE PERSONNEL ONLY!

CHANGING OF SPRINGS:

Now that the elevator is free from the dispenser it can be disassembled. "EXTRA CARE MUST BE TAKEN THAT THE ELEVATOR DOESN'T SPRING APART WHEN DISASSEMBLING." Place the elevator in an upright position with the bottom firmly against the floor. Push down on the crossarm bracket approx. 3" to 4" to release spring tension on the crossarm, and to remove the nail. Gradually release spring tension to remove springs. Lay the elevator on a flat surface and pull tubing apart to expose springs to be removed, and replace springs. "INSTALL SPRINGS WITH CUT SIDE DOWN."

PARTS LIST

CONTACT FACTORY FOR PART NUMBERS AND PRICING. HAVE MODEL NUMBER AVAILABLE.

DESCRIPTION	
Elevator assembly	data req'd.
Elevator springs	
Carrier tray	model no.

CLEANING INSTRUCTIONS:

TO CLEAN, WIPE DISPENSER THOROUGHLY WITH DAMP CLOTH AND MILD SOAP SUITABLE FOR USE IN FOOD CONTACT ZONES. "NO ABRASIVES."

SPECIFICATIONS

SELF-LEVELING MECHANISM:

The dispenser shall be equipped with automatic Self-Leveling compression type ELEVATORS (all stainless steel components). Each ELEVATOR shall consist of properly calibrated non-fatiguing stainless steel compression springs completely encased in die stamped stainless steel telescoping tubing. The ELEVATORS shall be connected by a removable platform carrier constructed of heavy gauge grade 18-8 stainless steel. The ELEVATORS and platform carrier are removable for cleaning.

TOP FLANGE:

Top flange shall be constructed of heavy gauge grade 18-8 stainless steel angle, welded, ground and polished. Outer edge of flange shall be beveled for additional strength and to provide a snug fit with the counter top. Dispenser shall be shipped knocked down and designed for easy field installation. NOTE: Counter cut-out should be reinforced to support the weight of the dispenser and its contents.

TRAY DISPENSERS MODEL DIT

MODEL	MAXIMUM WEIGHT	FLANGE O.A. L & W	COUNTER CUT-OUT
DIT-1014	10 7/8" x 15"	15 3/4 x 20 1/4	11 7/8" Xx19 1/4"
DIT2-1014	10 7/8" x 15"	27 3/4" x 20 1/4"	23 7/8" x 19 1/4"
DIT-1216	12 5/8" X 16 3/8"	22 1/8" x 17 5/8"	18 1/4" x 16 5/8"
DIT-1418	15 5/8" X 18 3/8"	23 5/8" x 19 5/8"	19 3/4" x 19 5/8"
DIT-1520	15 5/8" X 20 3/8"	25 5/8" x 20 5/8"	21 3/4" x 19 5/8"
DIT-1622	18 5/8" X 22 3/8"	27 5/8" x 20 15/8"	23 3/4" x 20 5/8"
DIT-1821	18 1/8" x 21 1/8"	26 5/8" x 23 1/8"	22 3/4" x 22 1/8"

RACK DISPENSERS MODEL DIR

MODEL	MAXIMUM WEIGHT	FLANGE O.A. L & W	COUNTER CUT-OUT
DIR-1020	10 1/4" X 20 1/4"	15 5/8" x 25 5/8"	11 3/4" x 24 5/8"
DIR2-1020	10 1/4" X 20 1/4"	26 5/8" x 25 5/8"	22 3/4" x 24 5/8"
DIR-2020	20 1/4" x 20 1/4"	25 5/8" x 25 5/8"	21 3/4" x 24 5/8"
DIR-18J	18" diameter	23 5/8" x 23 5/8"	19 3/4" x 22 5/8"