



# ATLAS METAL

1135 N.W. 159th DRIVE, MIAMI, FLORIDA 33169

TEL 305.625.2451

TOLL FREE 800.762.7565

FAX 305.623.0475

WWW.ATLASFOODSERV.COM

SALES@ATLASFOODSERV.COM

Project: \_\_\_\_\_

Item No.: \_\_\_\_\_

Quantity: \_\_\_\_\_

## MODULAR UNITS CA SERIES



CASB SHOWN WITH ACCESSORIES

# TRAY & SILVER UNIT

CASB

Self-Elevating

### SPECIFICATIONS

**TOP:** Constructed of 16 gauge, type 304 stainless steel, die-formed, welded, ground and polished. The top is provided with an opening to receive the appropriately sized tray dispenser unit, and includes two (2 ea.) silver bins with (8) nylon cylinders. An integral locking device shall be provided to align and retain cart positioning when two or more carts are joined.

**BODY:** Frame construction shall be of hi-tensile aluminum square tubing, 1-1/4" x 1-1/4". Frame sections are welded construction, ground and polished to a uniform finish. Body is complete with front panel and 7" rear apron of plastic laminate on .050 aluminum. Owner to specify finish.

**SELF-ELEVATING DISPENSER:** The cart included a DIT series drop-in self-leveling tray dispenser installed in the top. Constructed of 18 gauge, type 304 stainless steel, welded, ground and polished. The outer edge of the flange shall be beveled for additional strength and to provide a snug fit with the counter top. The Self-Leveling Elevators shall be stainless steel, die stamped, telescoping tubing, with stainless steel non-fatiguing, compression type springs. Capacity is approximately 100 trays per stack.

**CASTERS:** The casters shall be 5" diameter, non-marking rubber tired, swivel type with ball bearings in both swivel and axle raceways, provided with grease fittings. Both casters on operator's side have toe activated brakes.

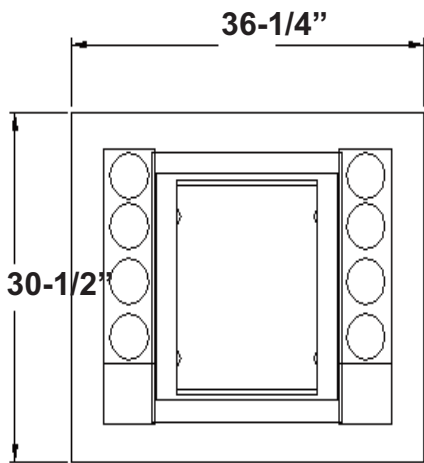
*Specifications subject to change without notice.*

### STANDARD FEATURES

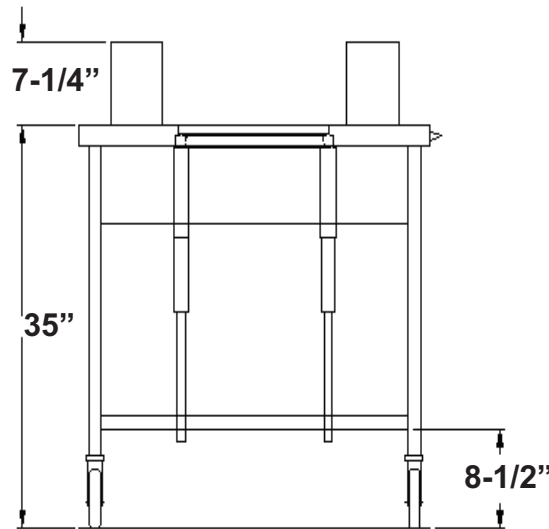
- Large capacity, self-elevating tray dispenser
- Fully mobile - each unit is provided with 5" dia. swivel casters, two with brakes
- Versatile - available in a wide range of sizes and a wide variety of finishes and colors
- 1-Year Parts & Labor Warranty
- UL Listed

### ACCESSORIES

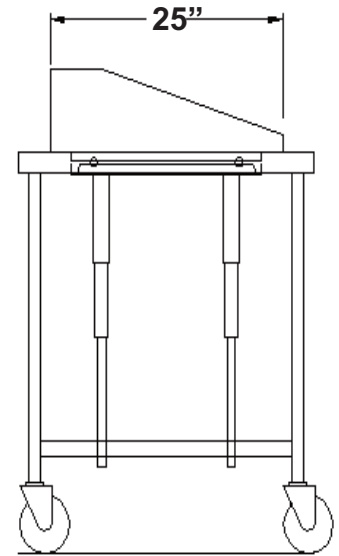
- **SL** - Tray Slide, 11-1/4" wide, S/S, 2-rail, fold-down
- **SLT** - Tray Slide, 11-1/4" wide, S/S, 3-rail, fold-down
- **SLS** - Tray Slide, 11-1/4" wide, S/S solid, ribbed, fold-down
- **SLF** - Tray Slide, 11-1/4" wide, plastic laminate with S/S runners, fold-down
- **SH** - Work Shelf, 8" wide, S/S, fold-down
- **CB** - Work Shelf, 8" wide, hardwood maple, fold-down
- **CR** - Work Shelf, 8" wide, Richlite, fold-down
- **ES** - End Shelf, 16" wide, S/S, fold-down
- **CBE** - End Shelf, 16" wide, hardwood maple, fold-down
- **EPA** - End Panel, aluminum w/ plastic laminate (each)
- **RP** - Rear Panel (fixed)
- **S** - S/S Front Panel
- **EPS** - S/S End Panel (each)
- **PP** - Painted Panels, urethane, in lieu of laminate
- **RPS** - Rear Sliding Doors, removable
- **HD** - Hinged Doors, S/S
- **DL** - Door Locks (set)(for RPS or HD)
- **P-CAST** - Polyurethane Casters, 2-W/Brakes
- **Legs** with adjustable feet in lieu of casters
- **BSF** - Front Skirt with recessed casters
- **BSE** - End Skirt (each)
- **BSR** - Rear Skirt



**PLAN VIEW**



**REAR ELEVATION**



**END VIEW**

MODEL	SHIP WT. (lbs.)
CASB	270 (122.5kg)