



# ATLAS METAL

1135 N.W. 159th DRIVE, MIAMI, FLORIDA 33169

TEL 305.625.2451

TOLL FREE 800.762.7565

FAX 305.623.0475

WWW.ATLASFOODSERV.COM

SALES@ATLASFOODSERV.COM

Project: \_\_\_\_\_

Item No.: \_\_\_\_\_

Quantity: \_\_\_\_\_

## MODULAR UNITS BL SERIES



BLU-4 SHOWN W/ ACCESSORIES

## UTILITY UNIT

Cafeteria Style

- BLU-1
- BLU-2
- BLU-3
- BLU-4
- BLU-5
- BLU-6

### SPECIFICATIONS

**TOP:** Constructed of 16 gauge, type 304 stainless steel, die-formed, welded, ground and polished to a uniform finish. The top includes a rolled front edge.

**BODY:** Frame construction shall be of hi-tensile aluminum square tubing, 1-1/4", with 3-3/4" extruded, vertical radius corners on the front. Frame sections are all welded construction, ground and polished to a uniform finish. Body is complete with front and end panels of .063 aluminum, and an 8-5/8" rear apron of .090 aluminum, all covered with plastic laminate. Owner to specify laminate selection. A cam-lock locking system is included with each unit to align and retain cart positioning when two or more units are joined. An 18 gauge stainless steel undershelf is included.

**CASTERS:** N.S.F. approved, 5" diameter, non marking rubber tired, swivel plate casters with grease fittings. Both casters on operator's side have toe activated brakes.

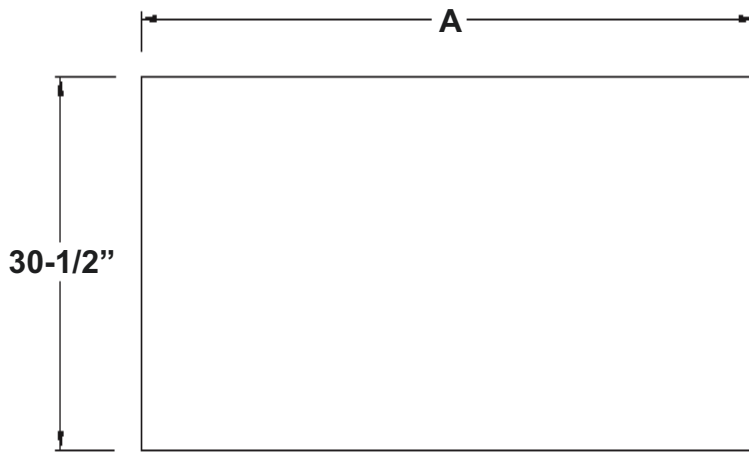
*Specifications subject to change without notice.*

### STANDARD FEATURES

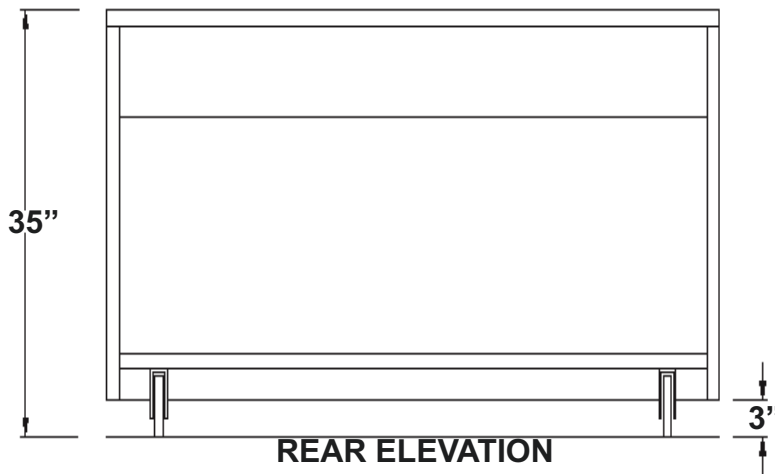
- Front and End Skirts with recessed casters
- Cam-Lock locking device - keeps tops level and equipment in place
- Fully mobile - each unit is provided with 5" dia. swivel casters, two with brakes
- Available in a wide range of plastic laminate panels, polyurethane enamel & powder coated frames and panels to blend with any decor
- Total versatility - available in a variety of lengths
- Bottom Shelf, S/S, removable, standard utility carts only
- 1-Year Parts & Labor Warranty
- UL Listed & NSF Approved

### ACCESSORIES

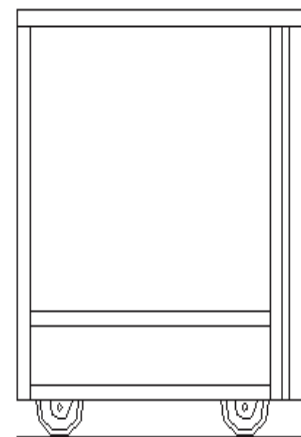
- **TS** - Tray Slide, 12" wide, S/S, solid, ribbed, fold-down
- **SL** - Tray Slide, 11-1/4" wide, S/S, 2-rail, fold-down
- **SLT** - Tray Slide, 11-1/4" wide, S/S, 3-rail, fold-down
- **SLF** - Tray Slide, 11-1/4" wide, plastic laminate w/ S/S runners, fold-down
- **SH** - Work Shelf, 8" wide, S/S, flat, fold-down
- **CB** - Work Shelf, 8" wide, hardwood maple, fold-down
- **CR** - Work Shelf, 8" wide, Richlite, fold-down
- **ES** - End Shelf, 18" wide, S/S, fold-down
- **CBE** - End Shelf, 16" wide, hardwood maple, fold-down
- **REVERSA PANEL** - Front
- **REVERSA PANEL** - Ends (set)
- **BLSF** - S/S Front Panel
- **BLSE** - S/S End Panel (each)
- **PP** - Painted Panels, polyurethane enamel, in lieu of laminate
- **USMB** - Undershelves, S/S, middle & bottom
- **RPS** - Rear Sliding Doors, removable, w/ laminate
- **HD** - Hinged Doors, S/S, w/ plastic laminate
- **DL** - Door Locks (set)
- **Sneeze Guards** - various styles available (see sneeze guard section of catalog)
- **SC** - Square Cutout
- **RC** - Round Cutout
- **FH** - Ferruled Hold in top (for cord drop)
- **U-SCT** - U-Shaped Cutout in counter (for roll in units)
- **UT** - Utility Drawer, 20-1/2 x 20-1/2 x 5
- **CD** - Cash Drawer with Lock
- **RST** - Reinforced S/S Top
- **CO** - Convenience Outlet (specify base or apron mount)
- **CO-DUP** - Convenience Outlet, Duplex receptacle
- **JBC** - Outlet Box in base, 4x4 (120V) with cord
- **JBH** - Outlet Box in base, 4x4 (120V/240V) with cord
- **ERS** - Electrical Raceway System
- **PCS** - 7 to 10 ft. Power Cord
- **CW** - Cord Wrap
- **P-CAST** - Polyurethane Casters, 2-W/Brakes
- **SL-BL** - Legs with adjustable feet, in lieu of casters



**PLAN VIEW**



**REAR ELEVATION**



**END VIEW**

MODEL	"A"	SHIP WT. (lbs.)
BLU-1	24" (60.9cm)	140 (63.5kg)
BLU-2	36-1/4" (92cm)	170 (77.1kg)
BLU-3	50" (127cm)	190 (86.1kg)
BLU-4	63-3/4" (161.9cm)	220 (99.7kg)
BLU-5	77-1/2" (196.8cm)	255 (115.6kg)
BLU-6	91-1/4" (231.7cm)	300 (136kg)