

# AT SERIES FOOD SHIELDS

## Full-Service Food Protector with food warmer Model AT6F-H

Quantity: \_\_\_\_\_ Item No: \_\_\_\_\_

- Finish: ☐ Brushed & Anodized Aluminum  
☐ Black Matte Powder Coat  
☐ Silver Powder Coat  
☐ Brushed Stainless Steel  
☐ \_\_\_\_\_

End Panels: (from customer side)

- ☐ Left ☐ Right

Warmer Options:

- ☐ Hatco® GRAH food warmer  
☐ Hatco® GRAHL food warmer with light

### DESCRIPTION

Full-service food protector with warmer for cafeteria counters and serving lines.

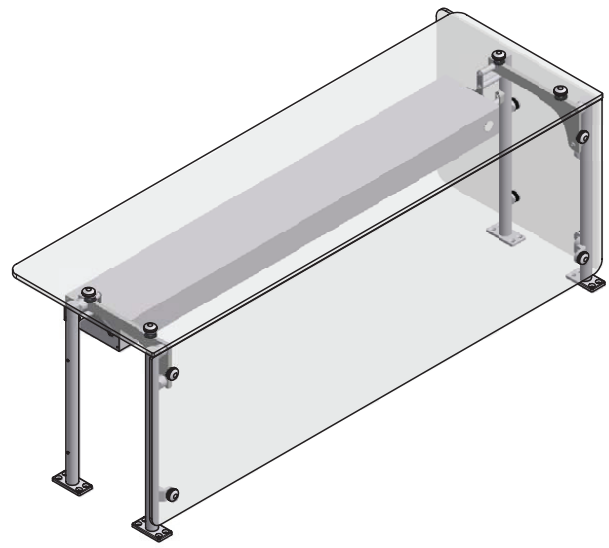
1"Ø CNC machined solid supports

Clear tempered glass panels that meet or exceed ANSI Z97.1 standards.

A wide range of finish options are available to match any décor.

Exceptional construction – all components CNC machined in the USA for years of service. Modular design and machined componentry allows for changes or additions at a later date.

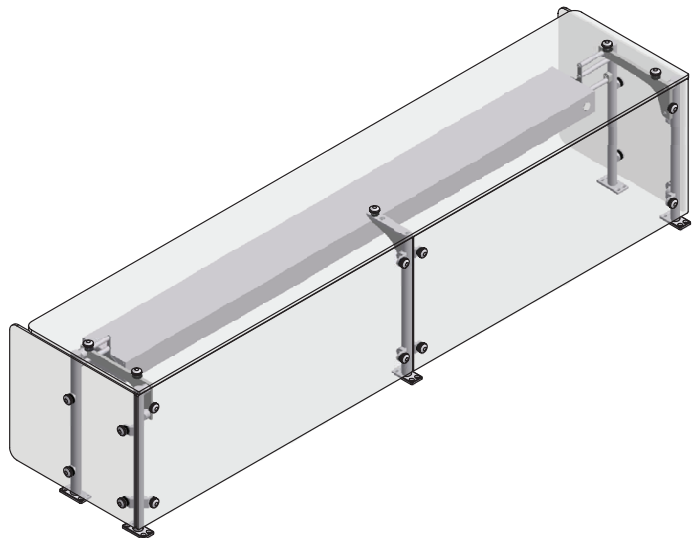
Produced, finished and assembled in the USA.



**Model AT6F-H-4**

*Shown with right end panel and Hatco GRAH food warmer.*

**VERSA-GARD®**  
Copyright © Versa-Gard, 2010



**Model AT6F-H-6**

*Shown with end panels and Hatco GRAH food warmer.*



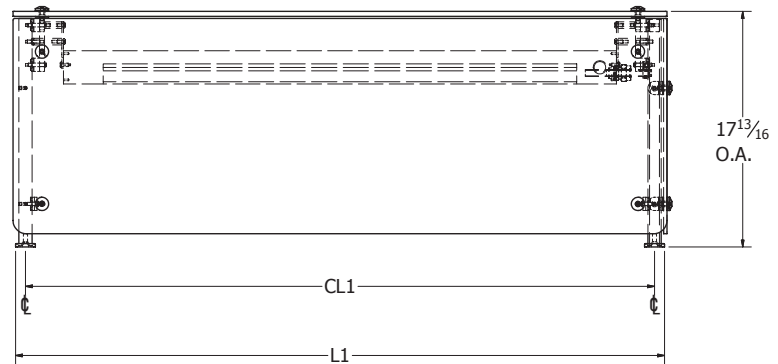
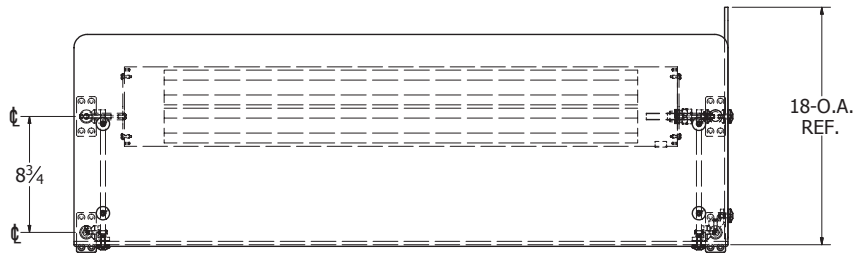
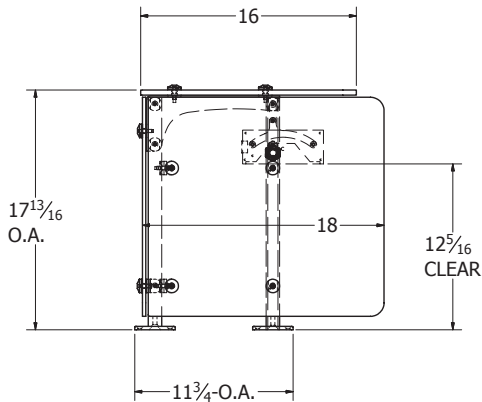
**ATLAS METAL**  
*atlasfoodserv.com*

*a subsidiary of Mercury Aircraft*  
1135 NW 159 Dr., Miami, Florida 33169  
Tel: (305) 625-2451 or (800) 762-7565 • Fax: (305) 623-0475

# Full-Service Food Protector with food warmer

## Model OA length (L1)

|                                   |         |
|-----------------------------------|---------|
| <input type="checkbox"/> AT6F-H-2 | 35 1/4" |
| <input type="checkbox"/> AT6F-H-3 | 49"     |
| <input type="checkbox"/> Custom   |         |



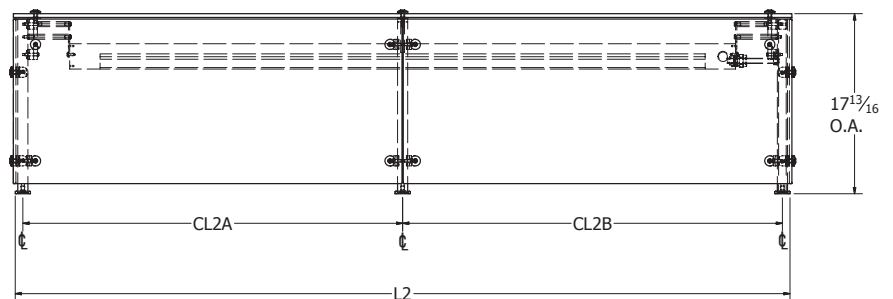
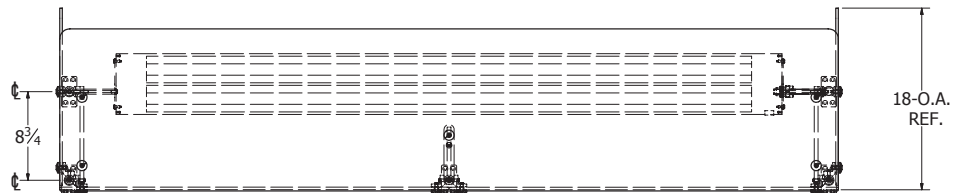
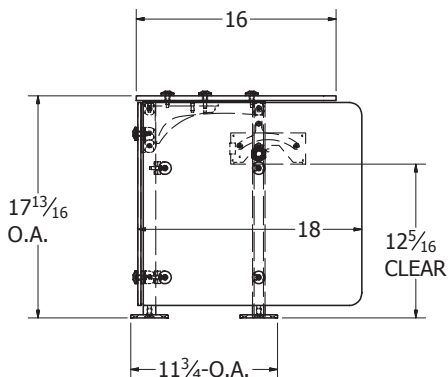
**VERSA-GARD®**  
Copyright © Versa-Gard, 2010



*Shown with right end panel and Hatco GRAH food warmer.*

## Model OA length (L2)

|                                   |         |
|-----------------------------------|---------|
| <input type="checkbox"/> AT6F-H-4 | 62 3/4" |
| <input type="checkbox"/> AT6F-H-5 | 76 1/2" |
| <input type="checkbox"/> AT6F-H-6 | 90 1/4" |
| <input type="checkbox"/> Custom   |         |



*Shown with end panels and Hatco GRAH food warmer.*



**ATLAS METAL**  
atlasfoodserv.com

a subsidiary of Mercury Aircraft  
1135 NW 159 Dr., Miami, Florida 33169  
Tel: (305) 625-2451 or (800) 762-7565 • Fax: (305) 623-0475