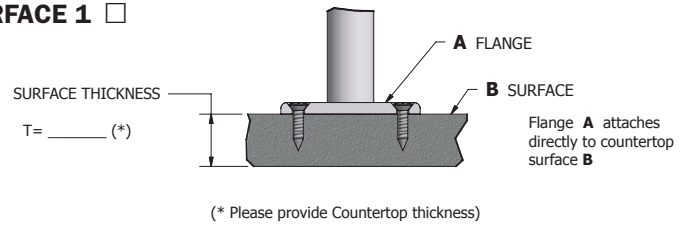


AT SERIES FOOD SHIELDS

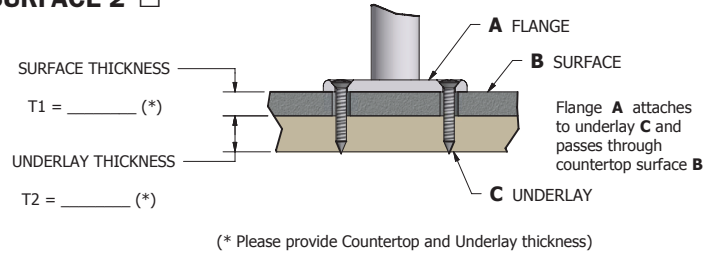
Mounting Hardware: Surface Mounting Options

VERSA-GARD®
Copyright © Versa-Gard, 2010

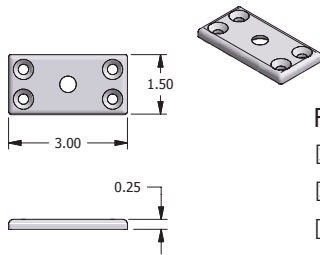
SURFACE 1 ☐



SURFACE 2 ☐

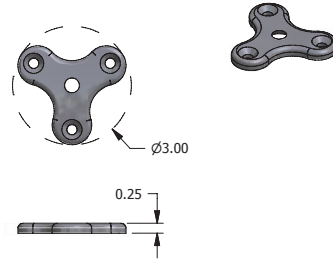


A1



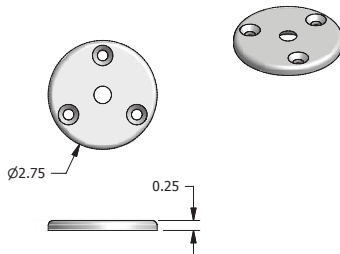
Finish:
☒ Anodized Aluminum
☒ Powder Coat
☐ Stainless Steel

S2



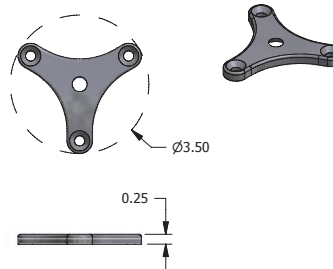
Finish:
☐ Anodized Aluminum
☒ Powder Coat
☒ Stainless Steel

A2



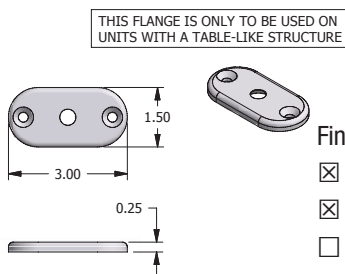
Finish:
☒ Anodized Aluminum
☒ Powder Coat
☐ Stainless Steel

S3



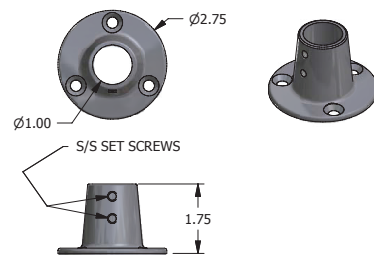
Finish:
☐ Anodized Aluminum
☒ Powder Coat
☒ Stainless Steel

A3



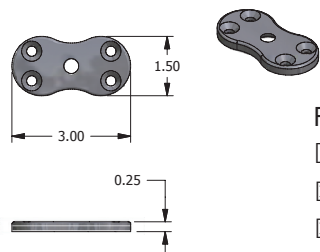
Finish:
☒ Anodized Aluminum
☒ Powder Coat
☐ Stainless Steel

S4



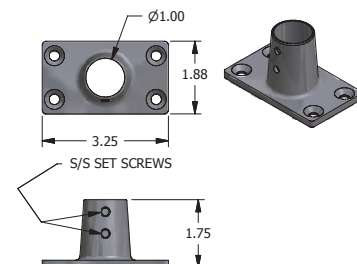
Finish:
☐ Anodized Aluminum
☒ Powder Coat
☒ Stainless Steel

S1



Finish:
☐ Anodized Aluminum
☒ Powder Coat
☒ Stainless Steel

S5



Finish:
☐ Anodized Aluminum
☒ Powder Coat
☒ Stainless Steel

AT SERIES FOOD SHIELDS

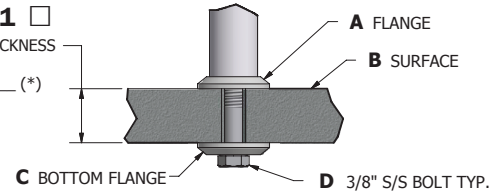
Mounting Hardware: Concealed Mounting Options

VERSA-GARD®
Copyright © Versa-Gard, 2010

CONCEALED 1 ☐

SURFACE THICKNESS

T= _____ (*)



(* Please specify Countertop thickness)

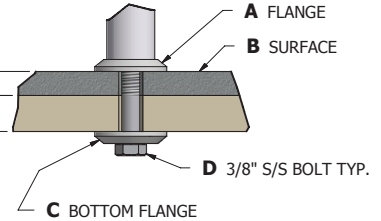
CONCEALED 2 ☐

SURFACE THICKNESS

T1= _____ (*)

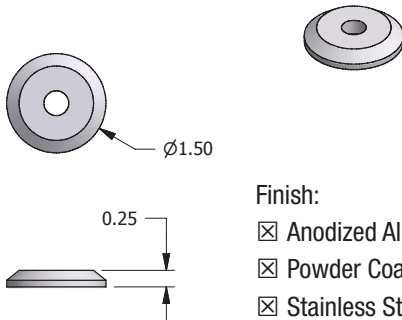
UNDERLAY THICKNESS

T2= _____ (*)



(* Please specify Countertop and Underlay thickness)

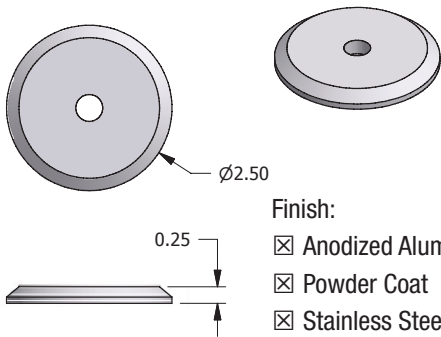
C1



Finish:

- ☒ Anodized Aluminum
- ☒ Powder Coat
- ☒ Stainless Steel

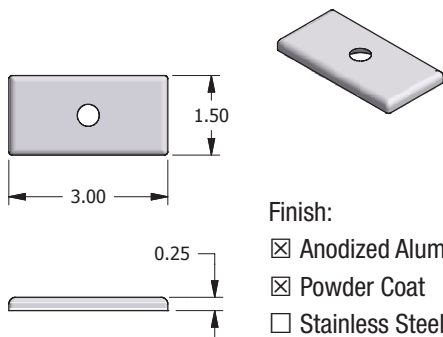
C2



Finish:

- ☒ Anodized Aluminum
- ☒ Powder Coat
- ☒ Stainless Steel

C3



Finish:

- ☒ Anodized Aluminum
- ☒ Powder Coat
- ☐ Stainless Steel